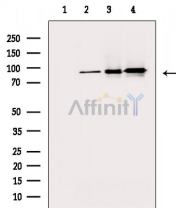


beta Catenin Monoclonal Ab

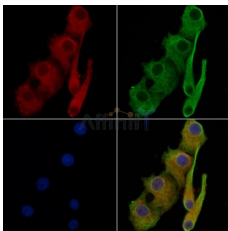
[Images\(2\)](#)

Cat.#: BF8016	Concn.: ~1mg/ml	Mol.Wt.: 85kDa
Size: 100ul	Source: Mouse	Clonality: Monoclonal
Application:	WB 1:500-1:2000, IF/ICC 1:100-1:500 *The optimal dilutions should be determined by the end user.	
Reactivity:	Human,Mouse,Rat	
Storage:	Mouse IgG1 in phosphate buffered saline (without Mg ²⁺ and Ca ²⁺), pH 7.4, 150mM NaCl, 0.02% sodium azide and 50% glycerol. Store at -20 °C. Stable for 12 months from date of receipt.	
Purification:	Affinity-chromatography.	
Immunogen:	A synthesized peptide derived from human beta Catenin.	
Uniprot:	P35222	



Western blot analysis of extracts from various samples, using beta Catenin Monoclonal Ab.

- Lane 1: Mouse brain treated with blocking peptide;
- Lane 2: Mouse brain;
- Lane 3: Rat brain;
- Lane 4: A549 cells.



BF8016 staining HeLa cells by IF/ICC. The samples were fixed with PFA and permeabilized in 0.1% Triton X-100, then blocked in 10% serum for 45 minutes at 25°C. Samples were then incubated with primary Ab(BF8016) and rabbit anti-beta tubulin Ab(AF7011) for 1 hour at 37°C. An AlexaFluor594 conjugated goat anti-mouse IgG(H+L) Ab(Red) and an AlexaFluor488 conjugated goat anti-rabbit IgG(H+L) Ab(Green) were used as the secondary Ab.

The nuclear counter stain is DAPI (blue).

IMPORTANT: For western blot, incubate membrane with diluted primary Ab in 5% w/v milk, 1X TBS, 0.1% Tween@20 at 4°C with gentle shaking, overnight.

For Research Use Only. Not for use in diagnostic and therapeutic procedures. Not for resale without express authorization.